

25G SFP28 Direct Attached Copper Cable (1/3/5M in length)

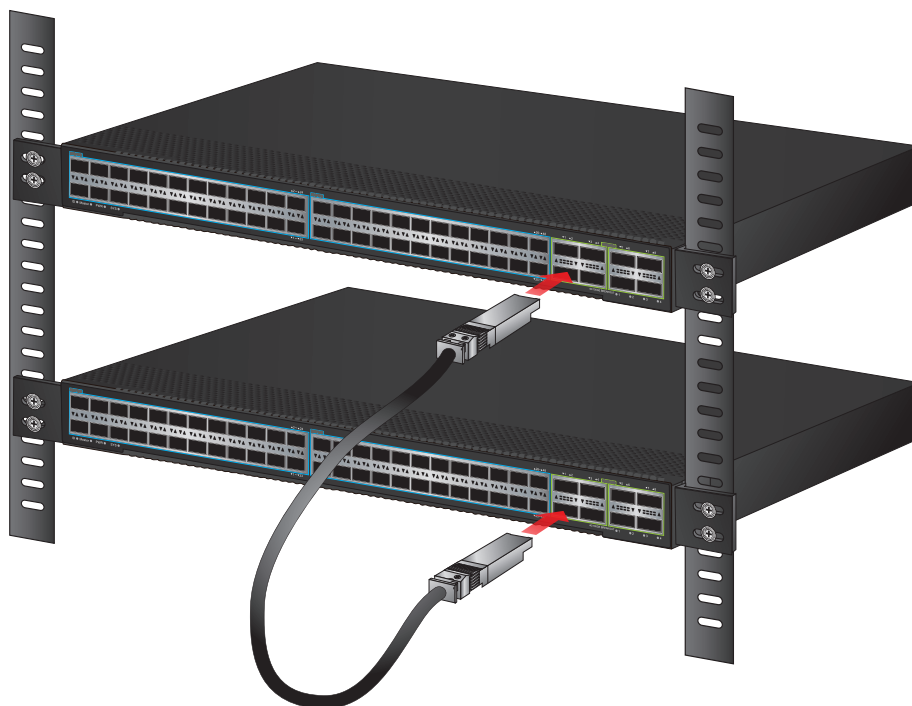


PLANET **25G SFP28 Direct Attached Copper Cable (1/3/5M)** is designed to work with PLANET products with 25G SFP28 interface to provide high-performance 25G Ethernet network within racks and across adjacent racks over a short distance. The **25G SFP28 Direct Attached Copper Cable (1/3/5M)** can be installed into PLANET 25G SFP28 interface products, such as DCS-7342-48Y8C Layer 3 Managed Switch.

- Complies with the IEEE 802.3by 25 Gigabit Ethernet Standard
- Complies with the standard small form pluggable plus (SFP28) slot
- Plug and Play configuration

Applications

Using 25G performance for in-rack connections between servers and switches



CB-DASFP 25G-5M

Specifications

Model	CB-DASFP25G-1M
Connector Type	SFP28
Data Transfer Rate	25Gbps
Length	1 meter
Operating Temperature	0~70 degrees C
Model	CB-DASFP25G-3M
Connector Type	SFP28
Data Transfer Rate	25Gbps
Length	3 meters
Operating Temperature	0~70 degrees C
Model	CB-DASFP25G-5M
Connector Type	SFP28
Data Transfer Rate	25Gbps
Length	5 meters
Operating Temperature	0~70 degrees C

Ordering Information

CB-DASFP25G-1M	25G SFP28 Direct Attached Copper Cable - 1M
CB-DASFP25G-3M	25G SFP28 Direct Attached Copper Cable - 3M
CB-DASFP25G-5M	25G SFP28 Direct Attached Copper Cable - 5M