

**Dual Band 802.11ax 3000Mbps Ceiling-mount
Wireless Access Point w/802.3at PoE+
and 2 10/100/1000T LAN Ports**

WDAP-C3000AX

Quick Installation Guide





Table of Contents

1. Package Contents	3
2. Physical Introduction	4
3. Hardware Installation	5
4. Connecting the AP (for Windows OS)	6
5. Wired Network Configuration (Windows 10 and Windows 11)	7
6. Entering into the Web Management.....	8
7. Wireless Network Connection	10
8. AP Discovery through PLANET NMS Controller (NMS-500/NMS-1000V).....	11
9. PLANET CloudViewer/CloudViewerPro App (Android & iOS)	12
Further Information:	14

1. Package Contents

Thank you for choosing PLANET WDAP-C3000AX. Before installing the AP, please verify the contents inside the package box.

The WDAP-C3000AX should contain the following items in the package:

WDAP-C3000AX	QR Code Sheet
	
Ethernet Cable	Mounting Kit
	

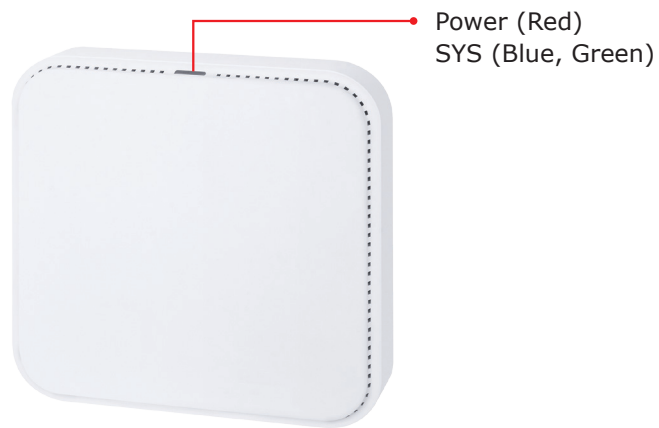


Note

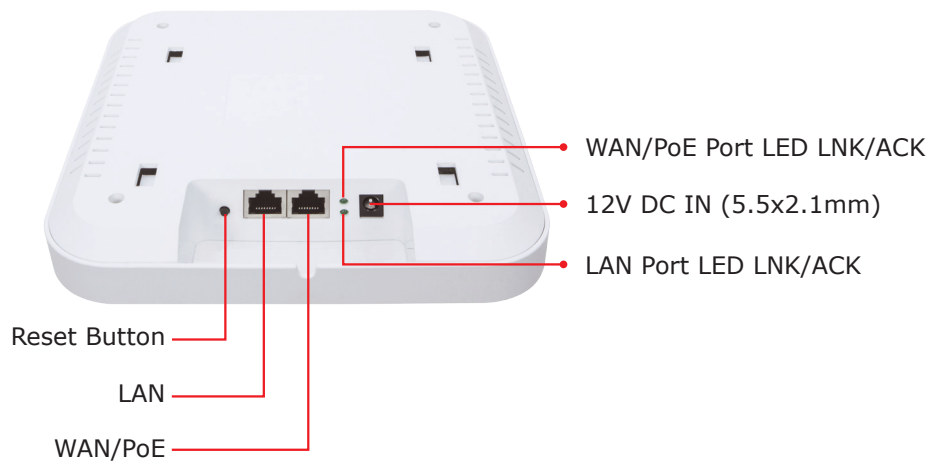
If there is any item missing or damaged, please contact the seller immediately.

2. Physical Introduction

Front Panel

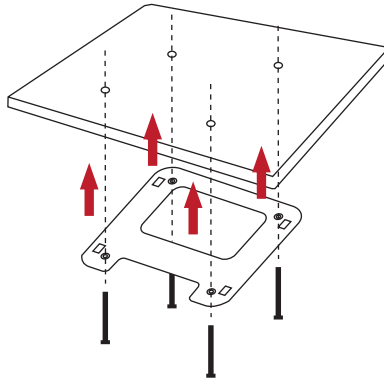


Rear Panel

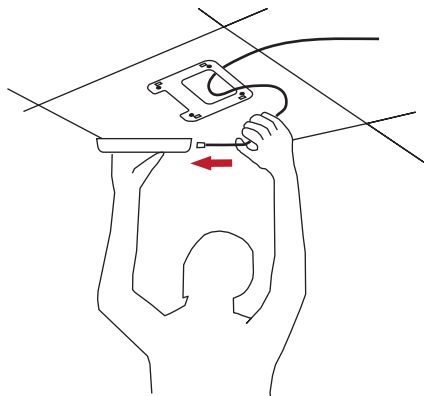


3. Hardware Installation

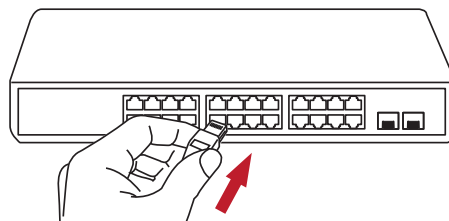
Step 1: Take the mounting bracket, put it on the target place by aligning the holes and fix it with the supplied screws.



Step 2: Load the device into the mounting bracket, and be sure the device is mated with fixed screws. Then, lock the device in position and plug the Ethernet cable into the WDAP-C3000AX.



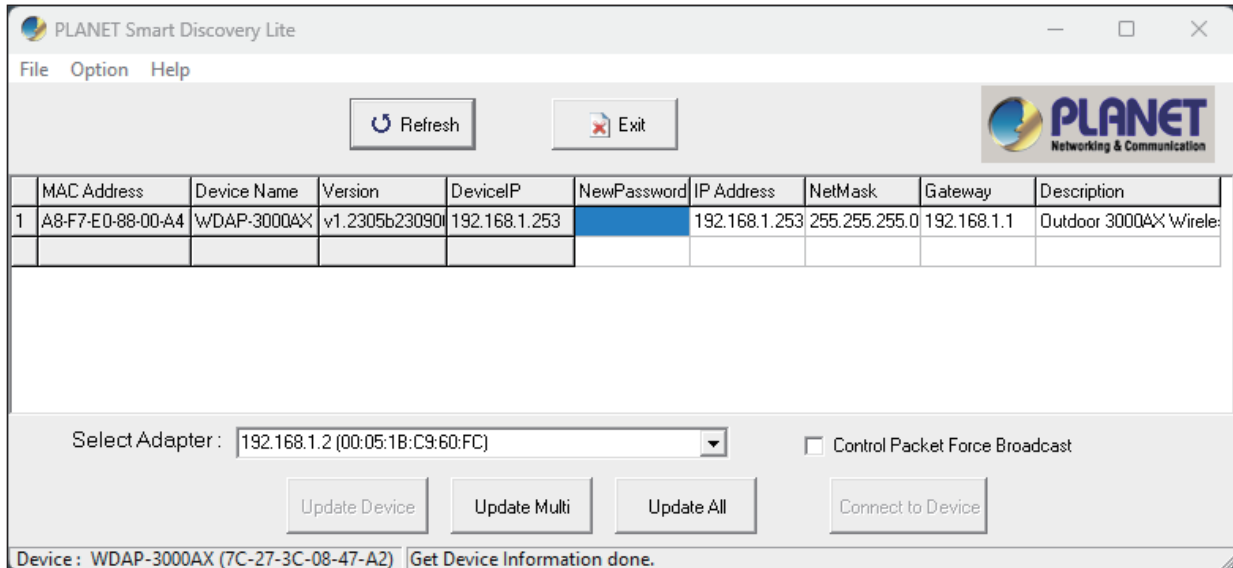
Step 3: Plug the other end of the Ethernet cable into the PoE switch.



4. Connecting the AP (for Windows OS)

As the default setting of connection type of WDAP-C3000AX is DHCP, your computer's IP address has to be the same network segment as the wireless AP. To find the IP address of the AP, use the utility of "Smart Discovery Lite", which can be found on PLANET official website.

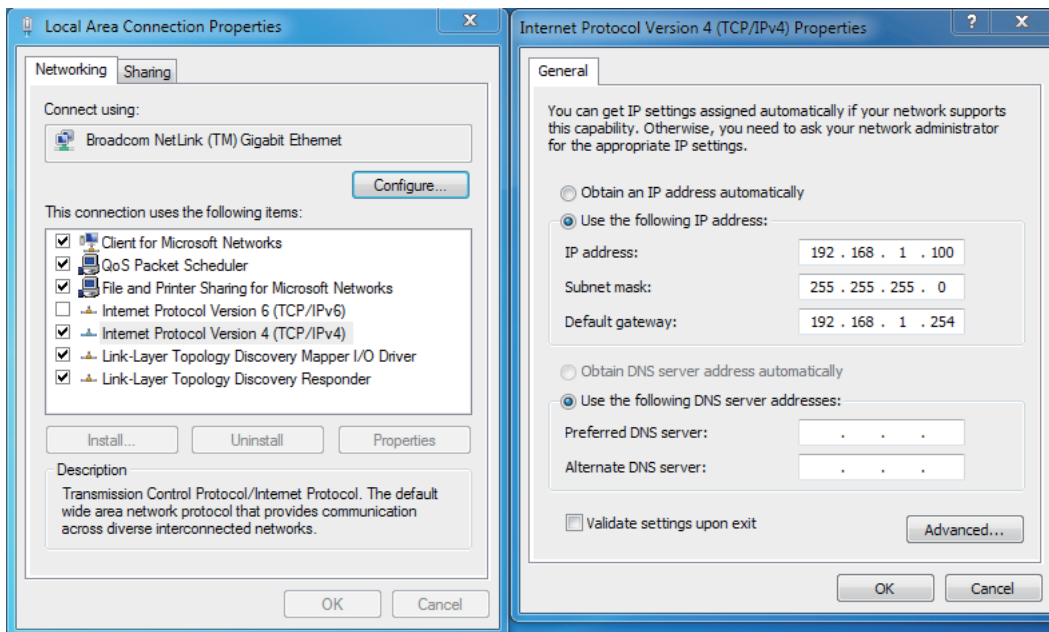
1. Launch the utility from your computer after you have downloaded and decompressed it.
2. Select your adapter to connect the AP.
3. Click the "Refresh" button.
4. The AP model and its IP address are shown.
5. Check whether the IP address of your adapter and the IP address of the AP are the same.
6. If yes, click "Connect to Devices" for the AP setting.
7. If no, go to the next page to set your wired or wireless setting.
8. If there is no DHCP server in the local network, the IP will go back to 192.168.1.253 by default after 60 seconds.



5. Wired Network Configuration (Windows 10 and Windows 11)

A computer with wired Ethernet connection is required for the first-time configuration of the wireless AP.

1. Click the **"Start"** button located at the lower-left corner of your computer.
2. Click **"Control Panel"**.
3. Double-click the **"Network and Sharing Center"** icon.
4. Click **"Change adapter settings"**.
5. Double-click **"Local Area Connection"**.
6. Select **"Internet Protocol Version 4 (TCP/IPv4)"** and click **"Properties"**.
7. Select **"Use the following IP address"** and then click the **"OK"** button twice to save the configuration. For example, the default IP address of the WDAP-C3000AX is 192.168.1.253 and the router is 192.168.1.254. You may choose from 192.168.1.1 to 192.168.1.252.



6. Entering into the Web Management

Default IP Address: **192.168.1.253** (The default IP address will be **192.168.1.253** if there is no DHCP server in the local network.)

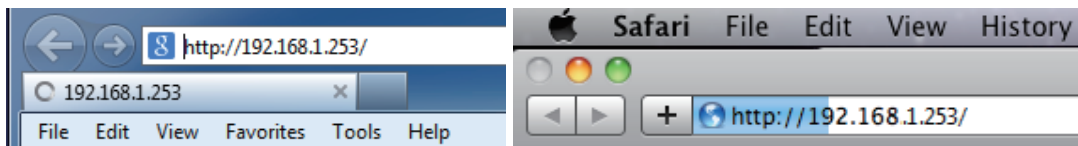
Default Username: **admin**

Default Password: **admin**

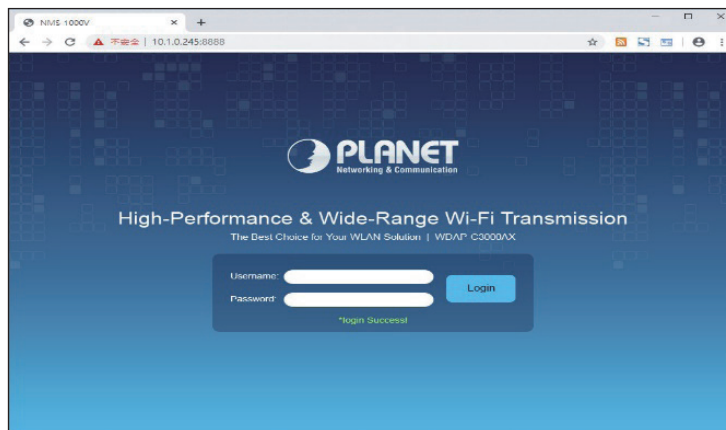
Default SSID (2.4GHz): **PLANET_2.4G**

Default SSID (5GHz): **PLANET_5G**

Step 1: The Web management allows you to access and manage the wireless AP easily. Launch the Web browser and enter the default IP address **http://192.168.1.253**.



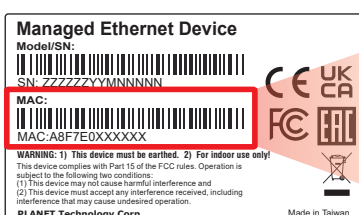
Step 2: When the following dialog box appears, please enter the default user name **"admin"** and password. Refer to **Step 3** to determine your initial login password.



Step 3: Default Username: **admin**

Default Password: **ap + the last 6 characters of the MAC ID in lowercase**

Find the MAC ID on your device label. The default password is "ap" followed by the last six lowercase characters of the MAC ID.



MAC ID: A8F7E0XXXXXX

Default Password: apxxxxxx

("x" means the last 6 digits of the MAC address.

All characters should be in lowercase.)

Step 4: After logging in, you will be prompted to change the initial username and password to a permanent one. The Password must contain 8 to 31 characters, including uppercase, lowercase, numerals and other symbols. Please note spaces (blanks) are not accepted.

STEP 1 - Account Modification

1 Account 2 Mode 3 LAN 4 Wireless Connection 5 Wireless 6 Completed

Username

Password

Confirm Password

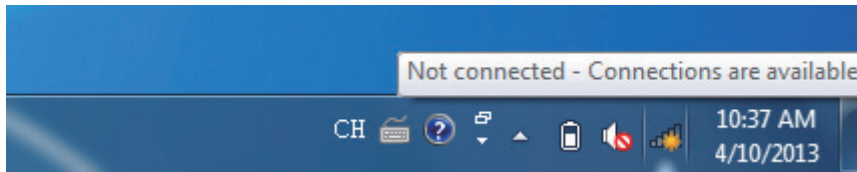
The password must contain 8-31 characters, including upper case, lower case, numerals and other symbols

Cancel Next

Step 5: Please follow the wizard to do the first-time setup and select the mode preferred.

7. Wireless Network Connection

Step 1: Right-click on the **network icon** displayed in the system tray.



Step 2: Highlight the wireless network (SSID) to connect and click the **[Connect]** button.



Step 3: Enter the **encryption key** of the WDAP-C3000AX if necessary.

You have already finished the configuration of the WDAP-C3000AX. Now you can use your smart phone, tablet, laptop, or any other Wi-Fi device to connect with it wirelessly and start surfing the internet.

8. AP Discovery through PLANET NMS Controller (NMS-500/NMS-1000V)

The WDAP-C3000AX is the Smart AP series which can be centrally managed by PLANET NMS Controller.

Follow the steps below to discover the managed AP through PLANET NMS controller (NMS-500/NMS-1000V). Please ensure each managed AP uses a different static IP in the same subnet before physically connecting to the managed network.

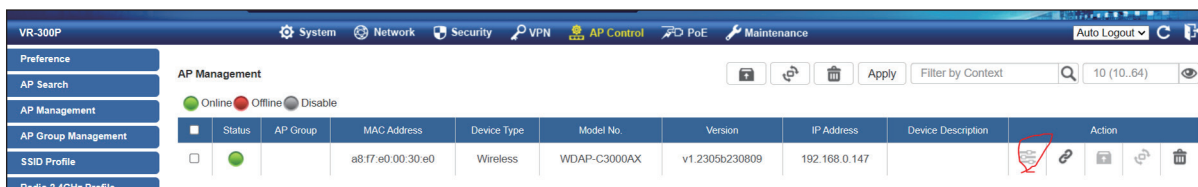
*** Please regularly check PLANET website for the latest compatible list of the controller/managed APs in each firmware version.

Step 1: Launch the Web browser (Google Chrome is recommended.) and enter the default IP address <https://192.168.1.100:8888> of the NMS controller. Then, enter the default username and password **“admin”** to log on to the system.

*The secure login with SSL (HTTPS) prefix is required.



Step 2: Go to the “Domain” page to discover and add the managed AP to the device list. Then, you can go to the “AP Control-> AP Management” page to configure pre-defined profiles to the managed AP without logging on to the AP’s web page.



Status	AP Group	MAC Address	Device Type	Model No.	Version	IP Address	Device Description	Action
<input type="checkbox"/>		a8:f7:e0:00:30:e0	Wireless	WDAP-C3000AX	v1.2305b230809	192.168.0.147		

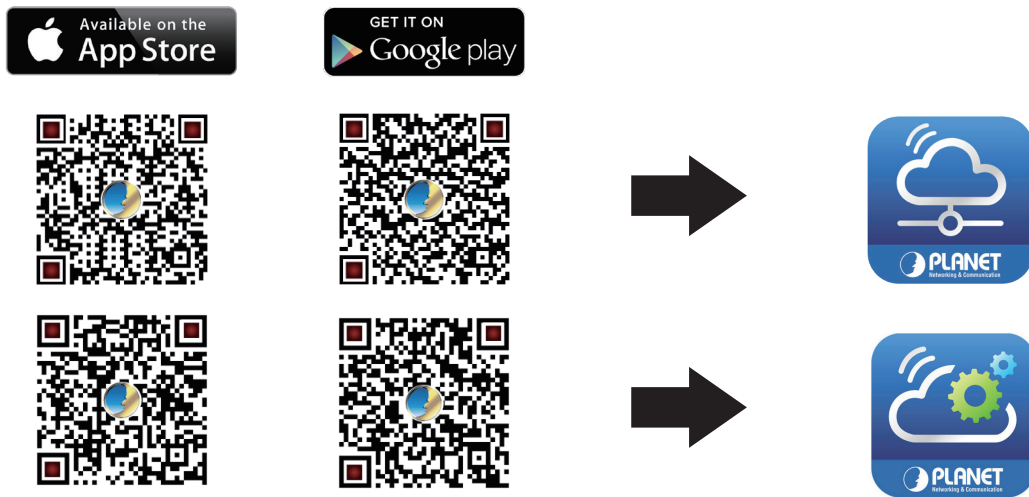
For information about further configuration of Managed AP by using PLANET Smart AP Control, refer to the configuration guide of the NMS controller (NMS-500/NMS-1000V).

9. PLANET CloudViewer/CloudViewerPro App (Android & iOS)

The WDAP-C3000AX is the Smart AP series which can be monitored by PLANET CloudViewer/CloudViewerPro app.

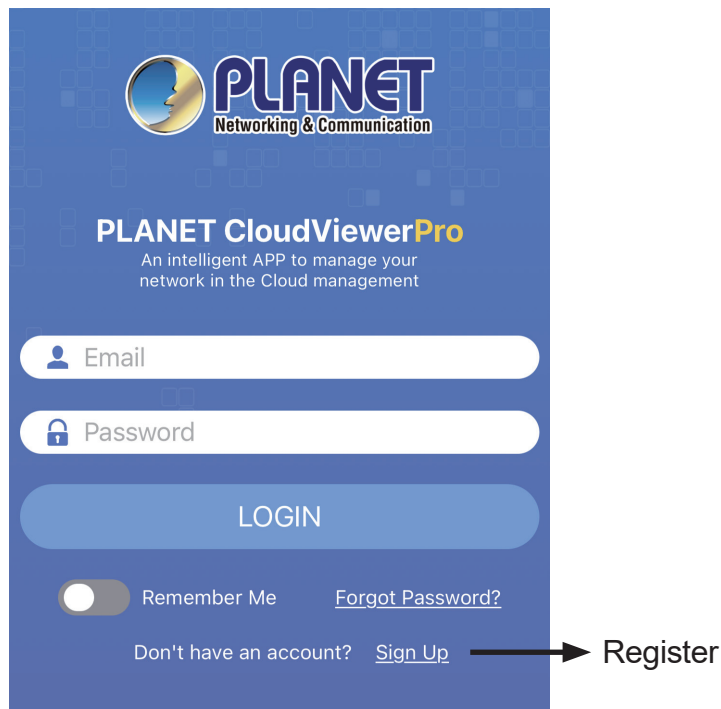
Step 1: Download PLANET CloudViewer/CloudViewerPro app

Get the **PLANET CloudViewer/CloudViewerPro** app from the Apple App Store or Google play, or simply scan the QR code.



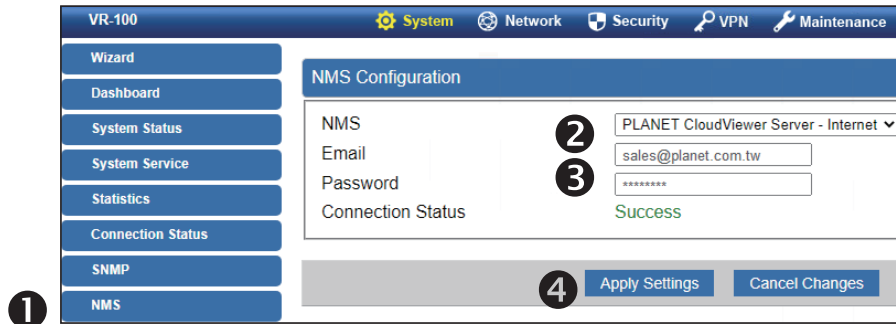
Step 2: Register

Launch the PLANET CloudViewer/CloudViewerPro app and log in with your PLANET CloudViewer/CloudViewerPro app. If you don't have an account, register an account with an e-mail address first.



Step 3: Bind Devices

1. Log in and go to the device **NMS** page
2. Select and enable the **PLANET CloudViewer Server – Internet** function
3. Fill in PLANET CloudViewer account (e-mail address) and password.



If CloudViewer server is connected, the connection status will show **success**.

If the server fails to connect, the connection status will show **authentication failed**.

Step 4: Log in CloudViewer/CloudViewerPro

After you get a Success indication from your device, you may now log in the app again to find your device in the list.



Further Information:

The above steps introduce the simple installations and configurations of the device. For further configurations, please refer to the user manual, which can be downloaded from the website.

WDAP-C3000AX

<https://www.planet.com.tw/en/support/download.php?&method=keyword&keyword=WDAP-C3000AX&view=3#list>



PLANET Network Management Solution (NMS):

<https://www.planet.com.tw/en/products/network-management>



If you have further questions, please contact the local dealer or distributor where you purchased this product.