

1. Package Contents

Thank you for purchasing PLANET ICS-120 2-Port RS232/422/485 Serial Device Servers. "Serial Device Server" is used as an alternative name in this Quick Installation Guide.

Open the box of the Serial Device Server and carefully unpack it. The box should contain the following items:

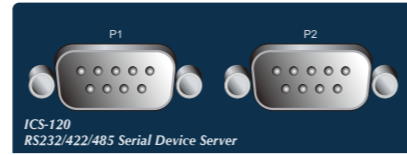


If any item is found missing or damaged, please contact your local reseller for replacement.

- 1 -

3. Hardware Introduction

3.1 Front Panel



3.2 Serial Port PIN Assignment

Male DB9	Pin	RS232	RS422 RS485-4W	RS485-2W
1	DCD	TxD+	--	--
2	RxD	TxD-	--	--
3	TxD	RxD-	Data-	--
4	DTR	RxD+	Data+	--
5	GND	GND	GND	--
6	DSR	--	--	--
7	RTS	--	--	--
8	CTS	--	--	--
9	--	--	--	--

3.3 Rear Panel

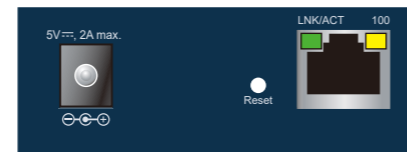


Figure 3-1: Rear Panel of ICS-120.

- 3 -

Default IP Address: **192.168.0.100**
Default Account: **admin**
Default Password: **admin**

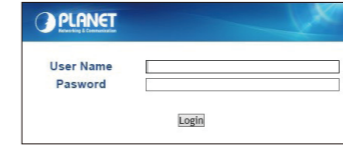


Figure 4-2: Login Screen

3. After entering the password, the main screen appears as shown in Figure 4-3.



Figure 4-3: Web Main Screen of Serial Device Server

- 5 -

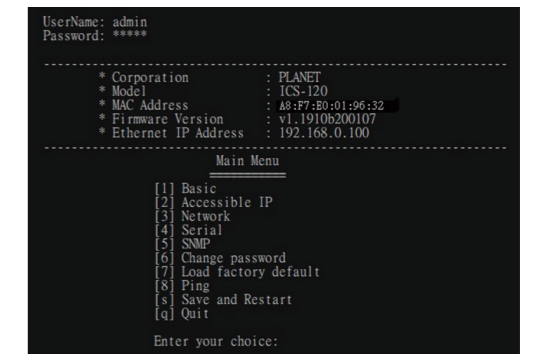
5. Remote Telnet Login

5.1 Remote Telnet Login

The Serial Device Server also supports Telnet for remote management. You can use Telnet to open a terminal session over one of the Ethernet ports. The Serial Server asks for user name and password for remote login when using Telnet; please use the following default IP address, username and password for the first-time login.

Default IP Address: **192.168.0.100**
Default Username: **admin**
Default Password: **admin**

You will be presented with a text menu displaying the Serial Device Server's general settings, which you will be able to view and modify. Please refer to User Manual for a description of the available settings.



- 7 -

2. Requirements

The Serial Device Server provides remote login interface for management purposes. The following equipment is necessary for further management:

- **Workstations** running Windows XP/2003/Vista/7/8/2008/10, MAC OS X or later, Linux, UNIX, or other platforms are compatible with TCP/IP Protocols.

• Ethernet Port Connection

- Workstations are installed with Ethernet NIC (Network Interface Card)
- Network cables: Use standard network (UTP) cables with RJ45 connectors
- The above PC is installed with Web browser

Note It is recommended to use Internet Explorer 8.0 or above to access the Serial Device Server.

Note If the Web interface of the Serial Device Server is not accessible, please turn off the anti-virus software or firewall and then try it again.

- 2 -

4. Web Login

4.1 Starting Web Management

The following shows how to start up the **Web Management** of the Serial Device Server. Note the Serial Device Server is configured through an Ethernet connection. Please make sure the manager PC must be set to the same **IP subnet address**.

For example, the default IP address of the Serial Device Server is **192.168.0.100**, then the manager PC should be set to **192.168.0.x** (where x is a number between 1 and 254, except 100), and the default subnet mask is 255.255.255.0.

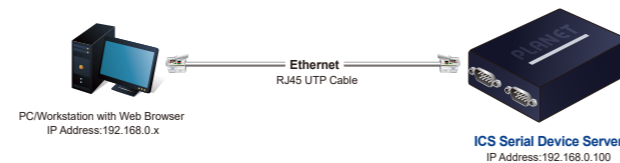


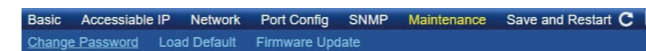
Figure 4-1: IP Management Diagram

4.2 Logging in to the Serial Device Server

1. Use Internet Explorer 8.0 or above for Web browser and enter IP address **http://192.168.0.100** (the factory-default IP address) to access the Web interface.
2. When the following dialog box appears, please enter the default user name "**admin**" and password "**admin**" (or the password you have changed before) as shown in Figure 4-2.

- 4 -

4. The Server Menu in the middle of the Web page lets you access all the functions and statuses the Serial Device Server provides.



Now, you can use the Web management interface to continue the Serial Server management. Please refer to the user manual for more.



Note

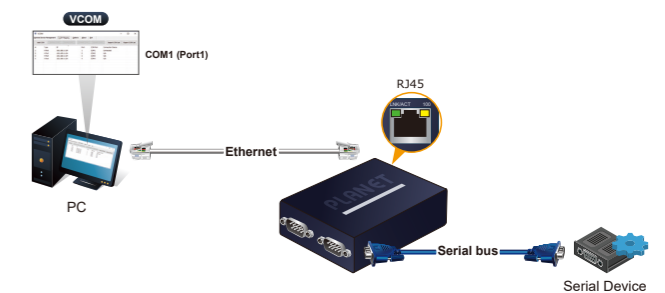
1. For security reason, **please change and memorize the new password after this first setup.**
2. Only accept command in lowercase letter under web interface.

- 6 -

6. Getting Started with VCOM Utility

With Serial Device Server's **VCOM** administration utility, you can easily install and configure one or multiple ICS-110, ICS-115A or ICS-120 device servers over the network from a remote location. There are several functions to configure Serial Device Server:

- Searching device
- Creating virtual COM port
- Firmware upgrade
- Importing or exporting file



- 8 -

6.1 Installation of VCOM Utility

The ICS-110/ICS-120 VCOM Utility can be downloaded from PLANET Web site. Please locate and run the setup program "vspsetup.exe" and follow the on-screen instructions.



download link: <https://www.planet.com.tw/en/support/downloads?&method=keyword&keyword=ICS&view=6#list>

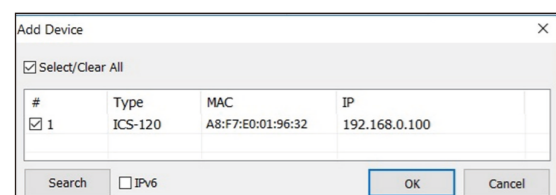
After installing, rebooting your workstation/PC is required.



If you have difficulty in downloading or executing VCOM Utility, turn off the firewall and anti-virus software first.

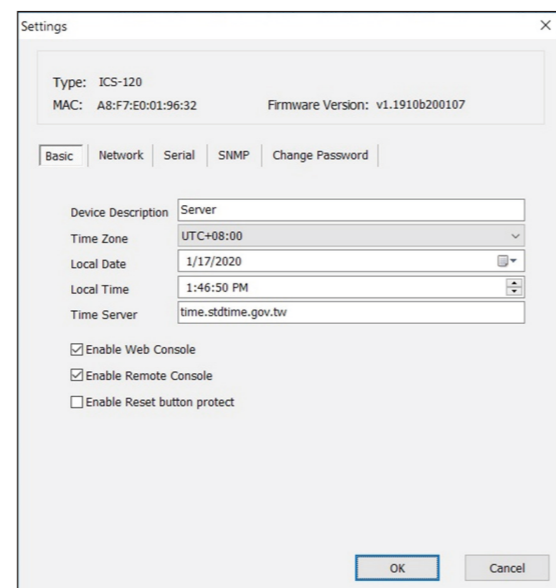
6.2 Searching Serial Device Server

First click "Add Device" and then click "Search" if Serial Server has access to network, as shown below.



6.4 Serial Server Setting

Click "Settings" to open the target Serial Device Server's configuration window.

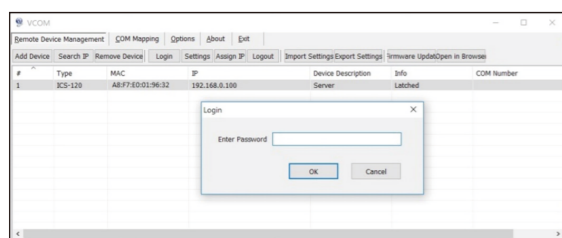


Parameters are grouped into tables. Click "OK" to implement changes

Please refer to user manual for a description of all functional properties for the Serial Device Server.

6.3 Serial Server Login

The ICS-110/ICS-120 Serial Server is password protected, so user can't modify any settings. The user must first log in the ICS-110/ICS-120 if the password is correct; the status will become "Logged in". On the contrary, if the password is incorrect, the status will pop up an error window.

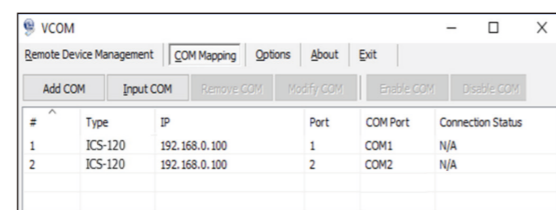


6.5 COM Port Mapping

While using the **COM Mapping** of VCOM Utility, the connection between the ICS-110/ICS-120 and the PC device administrator will create the corresponding **Virtual COM Port**, which supports Microsoft Windows XP or above platform.

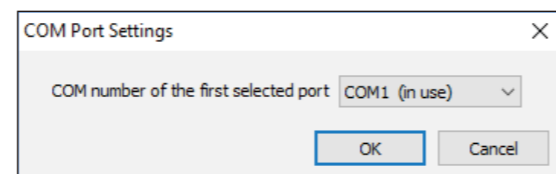
■ Add COM

If your Serial Server has been found, select it in order to add it to the COM mapping list. Click "OK" to take effect.

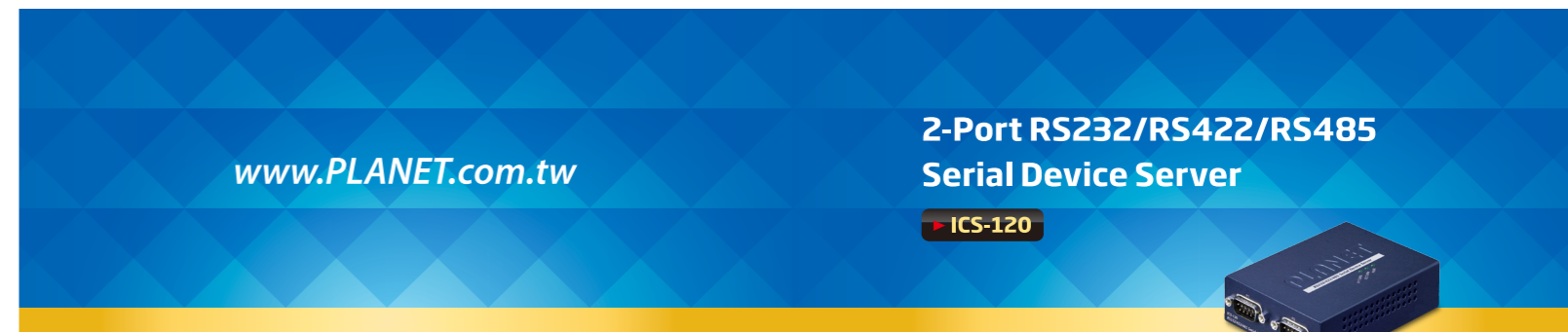


■ COM Mapping Settings.

Click "Modify COM" to configure Serial Server's serial COM port.



User can manually assign COM number to the ICS-110/ICS-120 Serial Server. After that, user can click the "OK" button, and finally must press the "OK" button to take effect.



PLANET Technology Corp.

10F., No. 96, Minquan Rd., Xindian Dist., New Taipei City 231, Taiwan

2010-A10100-000

Warning:
This device is compliant with Class A of CISPR 32.
In a residential environment this device may cause radio interference.



Energy Saving Note of the Device
This power required device does not support Standby mode operation. For energy savings, please remove the DC plug or slide the hardware-based Power Switch to the OFF position to disconnect the device from the power circuit. Without removing the DC plug from or switching off the device, the device will still consume power from the power source. In view of Saving the Energy and reducing the unnecessary power consumption, it is strongly suggested to power off or to remove the DC plug from the device if this device is not intended to be active.

7. Recovering Back to Default Configuration

■ IP Address has been changed or admin password has been forgotten -

To reset the IP address to the default IP address "192.168.0.100" or reset the login username and password to default value, press the hardware-based reset button on the bottom panel for about 5 seconds. After the device is rebooted, you can log in the management Web interface within the same subnet of 192.168.0.xx and default password. Be noted that all the previous setups will be disappeared after the factory default reset is made.

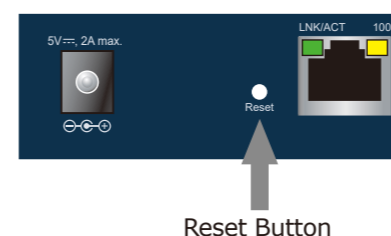


Figure 7-1: ICS-120 Hardware-based Reset Button

8. Customer Support

Thank you for purchasing PLANET products. You can browse our online FAQ resource on PLANET web site first to check if it could solve your issue. If you need more support information, please contact PLANET switch support team.

PLANET online FAQs:

<http://www.planet.com.tw/en/support/faq>

Switch support team mail address:

support@planet.com.tw



ICS-110/ICS-115A/ICS-120 User's Manual:
<https://www.planet.com.tw/en/support/download.php?method=keyword&keyword=ICS&view=3&page=1#list>

(Please select your Serial Device Server model from the Product Model drop-down menu



VCOM Utility:
<https://www.planet.com.tw/en/support/downloads?&method=keyword&keyword=ICS&view=6#list>

Copyright © PLANET Technology Corp. 2020.
Contents are subject to revision without prior notice.
PLANET is a registered trademark of PLANET Technology Corp.
All other trademarks belong to their respective owners.