

802.11ac 900Mbps Outdoor Wireless CPE

WBS-512AC

Quick Installation Guide

Table of Contents

1. Package Contents.....	3
2. Physical Introduction	4
3. Hardware Installation.....	5
4. Wired Network Configuration (Windows 10 and Windows 11).....	6
5. Entering into the Web Management	7
6. Easy to Set Up PtP Connection	8
7. AP Discovery through PLANET NMS Controller (NMS-500/NMS-1000V)	9
Further Information:	11

1. Package Contents

Thank you for choosing PLANET Outdoor Wireless CPE. Before installing, please verify the contents inside the package box.

WBS-512AC	Quick Guide Sheet
	
Ethernet Cable	Mounting Strap
	



Note

If there is any item missing or damaged, please contact the seller immediately.



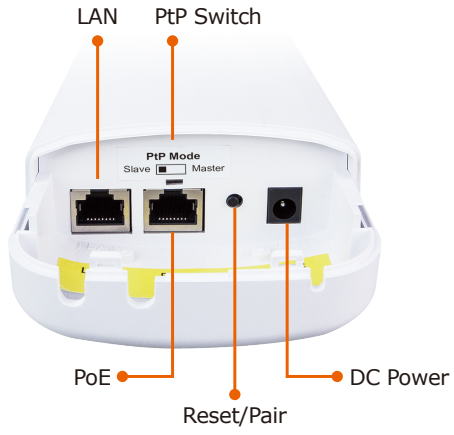
Caution

IMPORTANT SAFETY PRECAUTIONS:

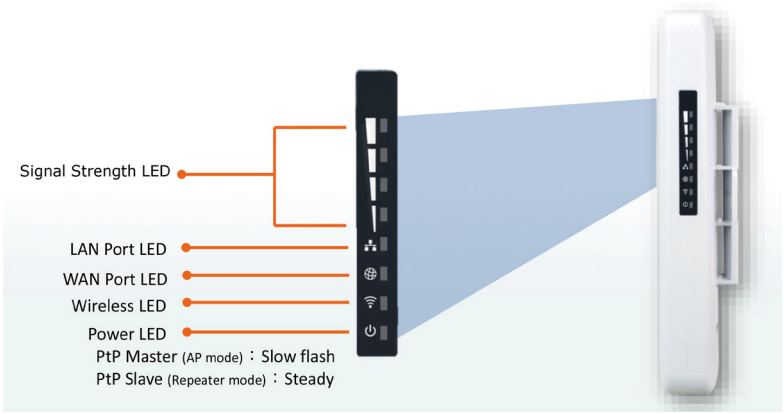
1. Carefully read the section "OUTDOOR INSTALLATION WARNING" in the manual before installation.
2. Users MUST complete grounding wired with the device; otherwise, a sudden lightning could cause fatal damage to the device. EMD (Lightning) DAMAGE IS NOT COVERED UNDER WARRANTY.

2. Physical Introduction

Hardware Description

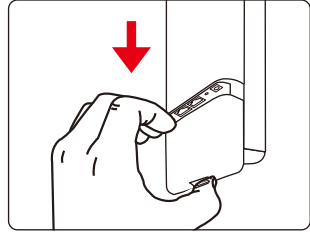
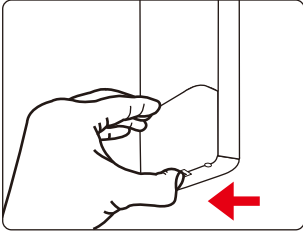


LED Indicators

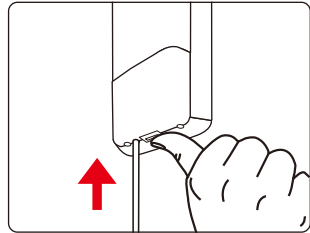
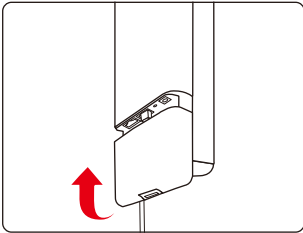


3. Hardware Installation

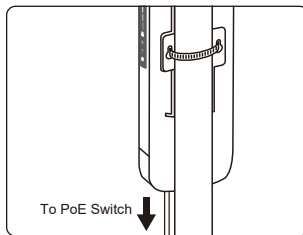
Step 1: Push the latch on the bottom of the Outdoor Wireless CPE to remove the sliding cover.



Step 2: Plug the RJ45 Ethernet cable into the PoE Port of the Outdoor Wireless CPE. Then, slide back the cover to finish the installation.



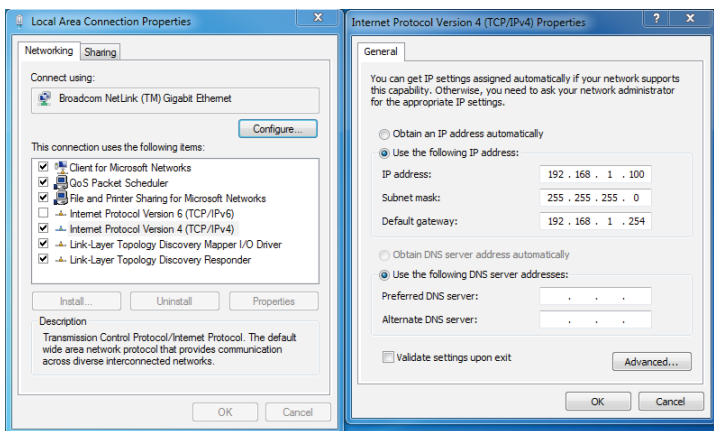
Step 3: Place the mounting strap through the slot on the back of the Outdoor Wireless CPE and then around the pole. Tighten the mounting strap to secure the Outdoor Wireless CPE.



4. Wired Network Configuration (Windows 10 and Windows 11)

A computer with wired Ethernet connection is required for the first-time configuration of the Wireless AP.

1. Click the **"Start"** button located at the lower-left corner of your computer.
2. Select **"Control Panel-> Network and Sharing Center"**.
3. Click **"Change adapter settings"**.
4. Double-click **"Local Area Connection"**.
5. Select **"Internet Protocol Version 4 (TCP/IPv4)"** and click **"Properties"**.
6. Select **"Use the following IP address"** to configure the IP address to **"192.168.1.x"** ("x" can be any number from 2 to 254, except 253) and then click the **"OK"** button to save the configuration.



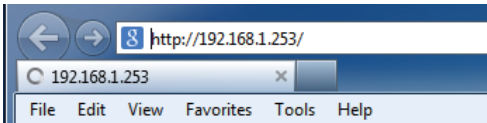
5. Entering into the Web Management

Default IP Address: **192.168.1.253**

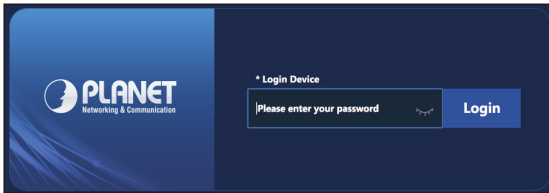
Default Password: **admin**

Default SSID (5GHz): **PLANET_5G**

Step 1: Launch the Web browser and enter the default IP address **http://192.168.1.253**.

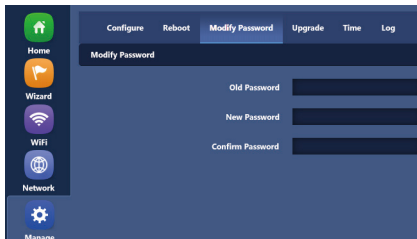


Step 2: The default password is "admin". Then click the **LOGIN** button to continue.



For security reasons, it is recommended to change the password at the first login and memorize it.

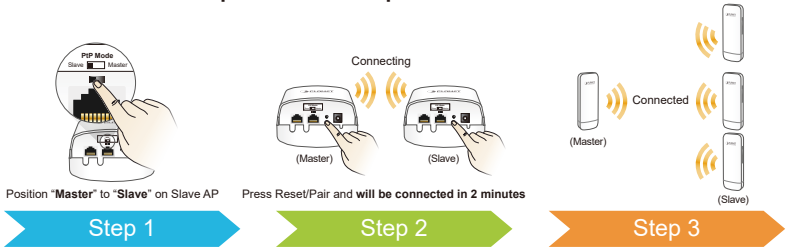
Step 3: For security reasons, it is strongly recommended to go to **Advanced** to configure the Encryption Method and Passphrase of your wireless network.



6. Easy to Set Up PtP Connection

- Step 1:**
- (1) Position "**Master**" to "**Slave**" on the AP.
 - (2) Press the "**Reset/Pair**" button on both APs to be connected in 2 minutes.
 - (3) The connection has been successfully established.

3 Steps to Set Up PtP Connection



7. AP Discovery through PLANET NMS Controller (NMS-500/NMS-1000V)

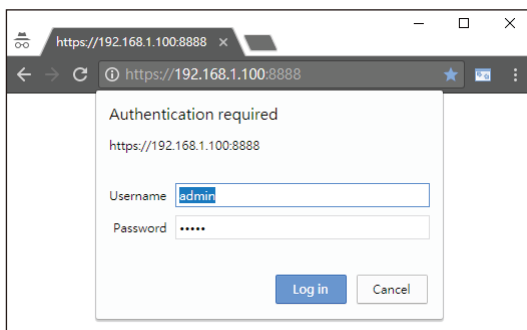
The WBS-512AC is the Smart AP series which can be centrally managed by PLANET NMS Controller.

Follow the steps below to discover the managed AP through PLANET NMS controller (NMS-500/NMS-1000V). Please ensure each managed AP uses a different static IP in the same subnet before physically connecting to the managed network.

*** Please regularly check PLANET website for the latest compatible list of the controller/managed APs in each firmware version.

Step 1: Launch the Web browser (Google Chrome is recommended.) and enter the default IP address <https://192.168.1.100:8888> of the NMS controller. Then, enter the default username and password "admin" to log on to the system.

*The secure login with SSL (HTTPS) prefix is required.



Step 2: Go to the “Domain” page to discover and add the managed AP to the device list. Then, you can go to the “AP Control-> AP Management” page to configure pre-defined profiles to the managed AP without logging on to the AP’s web page.



For information about further configuration of Managed AP by using PLANET Smart AP Control, refer to the configuration guide of the NMS controller (NMS-500/NMS-1000V).

Further Information:

The above steps introduce the simple installations and configurations of the device. For further configurations, please refer to the user manual, which can be downloaded from the website.

WBS-512AC:

<https://www.planet.com.tw/en/support/downloads?&method=keyword&keyword=WBS-512AC&view=3#list>



PLANET Network Management Solution (NMS):

<https://www.planet.com.tw/en/products/network-management>



If you have further questions, please contact the local dealer or distributor where you purchased this product.

