

1. Overview

Thank you for purchasing PLANET 150-watt DC power supply.

Power Supply Unit	Input Range
XGS-PWR150-DC	-36 to -72V DC

Open the box of the Redundant Power Supply unit and carefully unpack it. The box should contain the following items:

- The DC Power Supply unit x 1
- User's Manual x 1

If any item is found missing or damaged, please contact your local reseller for replacement.

- 1 -

3. Installing Redundant Power Supply Unit



Note

The XGS-PWR150-DC is hot-swappable, so there is no need to power off the switch before installing or removing the power supply unit.

Follow these steps to install the redundant power in the switch:

1. Place the Switch on a flat surface. Use a screwdriver to unscrew screws on both sides of the blank plate to remove the blank plate. Do not discard the blank plate as it can be used again when removing the power supply unit from the switch.

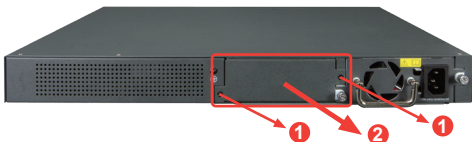


Figure 3-1 Removing the Blank Plate

- 3 -

2. Introduction

Before installation, please be sure to read this user's manual carefully to complete the correct installation of XGS-PWR150-DC Power Supply Unit. This manual shows how to quickly install the power in the XGS-6350-24X4C Switch.

The following figure shows the front panel of the XGS-PWR150-DC.

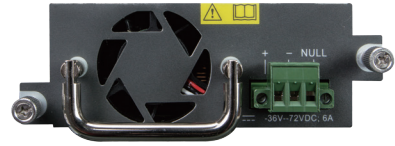


Figure 2-1 XGS-PWR150-DC Front View

- 2 -

2. Install the redundant power by sliding the power supply unit into the compartment.

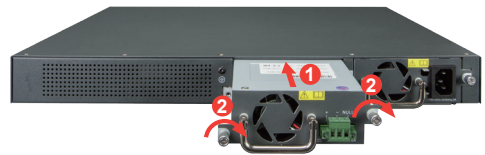


Figure 3-2 Sliding the Power Supply Unit into the Compartment

3. Next, tighten the thumbscrews on both sides.



Figure 3-3 Tightening the XGS-PWR150-DC

- 4 -

www.PLANET.com.tw

150-watt DC Power Supply for XGS-6350-24X4C Switch

▶ XGS-PWR150-DC



PLANET Technology Corp.

10F., No. 96, Minquan Rd., Xindian Dist., New Taipei City 231, Taiwan

Warning:
This is a class A product. In a domestic environment this product may cause radio interference in which case the user may be required to take adequate measures.

2351-A98090-000



4. Wiring the DC Power Input

The 3-pin terminal block connector on the redundant power uses DC power input. Please follow the steps below to insert the power wire.



Note

1. Before connecting the DC power wires, please check whether your local DC power source is stable.
2. The wire gauge for the power cable should be in the range of 12 ~ 24 AWG.
3. The DC power input range is -36 ~ -72V DC.

1. Insert the positive DC power wire into the **positive(+)** contact (left pin) and tighten the wire-clamp for preventing the DC power wire from loosening.
2. Insert the negative DC power wire into the **negative(-)** contact (middle pin) and tighten the wire-clamp for preventing the DC power wire from loosening.
3. Insert the grounding power wire into the **grounding(G)** contact (right pin) and tighten the wire-clamp for preventing the power wire from loosening.

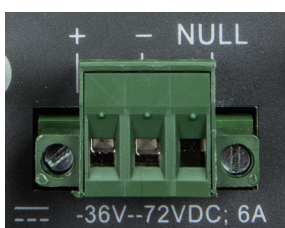


Figure 4-1 Power Pin Design of XGS-PWR150-DC

5. Removing Redundant Power Supply Unit

Follow these steps to remove the redundant power from the switch:

1. Remove all DC power wires from the terminal block of the XGS-PWR150-DC.
2. To remove the redundant power from the XGS-6350-24X4C, loosen the thumbscrews on both sides and pull it out.

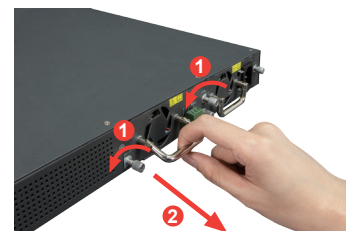


Figure 5-1 Removing the XGS-PWR150-DC