

**Internet Telephony PBX System
(30/100/200/500 SIP Users Registrations)**

IPX-330/IPX-2100/IPX-2200/IPX-2500

Quick Installation Guide

Table of Contents

1. Internet Telephony PBX System	3
1.1. Package Contents	3
1.2 Hardware Installation	4
1.2.1 Safety Instructions	4
1.2.2 Placement.....	4
2. IPX-330	5
2.1 Physical Introduction.....	5
2.1.1 LED Definitions	5
2.1.2 Physical Connection Topology of the IPX-330	6
3. IPX-2100	7
3.1 Physical Introduction.....	7
3.1.1 LED Definitions	7
3.1.2 Physical Connection Topology of the IPX-2100	8
4. IPX-2200 / IPX-2500.....	9
4.1 Physical Introduction.....	9
4.1.1 LED Definitions	9
4.1.2 Physical Connection Topology of the IPX-2200 / IPX-2500.....	10
5. Basic System Configuration	11
5.1 New System Setup Wizard	11
5.2 Web Admin Login	12
5.2.1 Configuring the Network Setting	13
5.2.2 Changing IP Address or forgotten Admin Password.....	15
6. Further Configuration	16

1. Internet Telephony PBX System

1.1. Package Contents

Thank you for purchasing PLANET Internet Telephony PBX system. This Quick Installation Guide will introduce how to finish the basic setting of connecting the web management interface and the Internet. Open the box of the Internet Telephony PBX system and carefully unpack it.

The box should contain the following items:

Model	Package Description
IPX-330 (30 user registers)	<ul style="list-style-type: none">● Quick Installation Guide x 1● Power Adapter x 1 (12V DC)● RJ45 x 1
IPX-2100 (100 user registers)	<ul style="list-style-type: none">● Quick Installation Guide x 1● Power Adapter x 1 (12V DC)● RJ45 x 1● Bracket x 2
IPX-2200 (200 user registers)	<ul style="list-style-type: none">● Quick Installation Guide x 1● Power Cord x 1● RJ45 x 1● Bracket x 2
IPX-2500 (500 user registers)	



Note

If any of the above items are damaged or missing, please contact your dealer immediately.

1.2 Hardware Installation

The following are instructions for setting up PLANET Internet Telephony PBX system. Refer to the illustration and follow the simple steps below to quickly install your Internet Telephony PBX system.

1.2.1 Safety Instructions

The following are the safety instructions for Internet Telephony PBX system before installing.

- The maximum operating temperature of the Internet Telephony PBX system is 0~40°C, which allows sufficient air circulation.
- The connections and equipment that supply power to the IP PBX should be capable of operating safely with the maximum power requirements of the IP PBX. In the event of a power overload, the supply circuits and supply wiring should become hazardous.
- The power adapter must plug into the right supply voltage. Make sure that the supplied power voltage is correct and stable. If the input power voltage is over 10% lower than the standard, it may cause the IP PBX to malfunction.
- Generally, when installed after the final configuration, the product must comply with the applicable safety standards and regulatory requirements of the country in which it is installed. If necessary, consult for technical support.

1.2.2 Placement

Make sure the device is placed in a safe environment to avoid equipment failure.

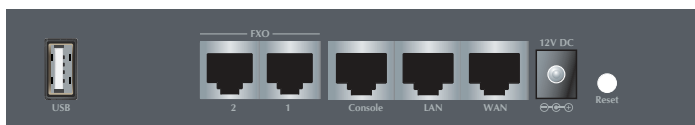
- DO NOT place anything on top of the device. Excessive weight could damage it.
- DO NOT obstruct ventilation slots on each side of the IP PBX or expose it to direct sunlight or other heat sources. Be sure that there is adequate air flow around the IP PBX.
- Place the IP PBX on a flat surface to avoid any damage.

2. IPX-330

2.1 Physical Introduction



Front Panel of the IPX-330

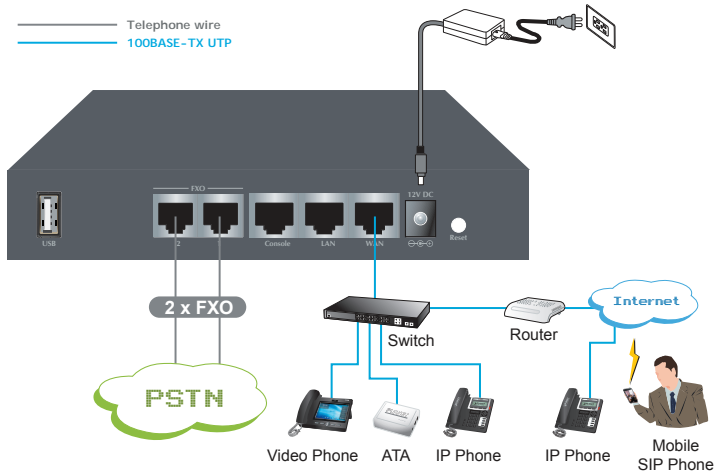


Rear Panel of the IPX-330

2.1.1 LED Definitions

Front Panel LED	Status	Description
PWR	Steady Green Off	PBX power ON PBX power OFF
WAN	Blinking Green On Off	Data is transferring PBX network connection established Waiting for network connection
LAN	Blinking Green On Off	Data is transferring PBX network connection established Waiting for network connection
FXO 1~ FXO 2	Steady Red Blinking Off	Ready/Standby Ringing Module not available
SYS	Blinking Green On Off	System is working System doesn't boot System failed

2.1.2 Physical Connection Topology of the IPX-330



3. IPX-2100

3.1 Physical Introduction



Front Panel of the IPX-2100



Rear Panel of the IPX-2100



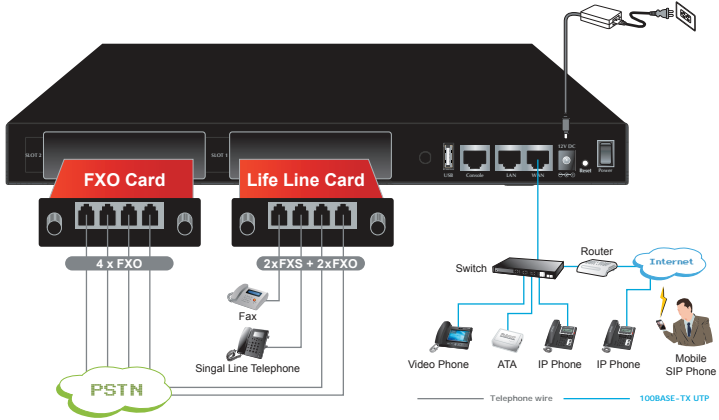
Note

1. Supporting 2 slots, user can buy expansion module like IPX-21FO (4 x FXO) or IPX-21GS (4 x GSM) for extending port service.
2. If IPX-21GS is used, please disable pin lock function. Otherwise, dial out or call in will not be available.

3.1.1 LED Definitions

Front Panel LED	Status	Description
PWR	Steady Green Off	PBX power ON PBX power OFF
SYS	Blinking Green On Off	System is working System doesn't boot System failed
WAN	Blinking Green On Off	Data is transferring PBX network connection is established Waiting for network connection
LAN	Blinking Green On Off	Data is transferring PBX network connection is established Waiting for network connection
Slot 1~Slot 2 FXO / GSM / FXS	Steady Red Flashing Off	Ready/Standby (SIM card inserted) Ringing Module not available

3.1.2 Physical Connection Topology of the IPX-2100



4. IPX-2200 / IPX-2500

4.1 Physical Introduction



Front Panel of the IPX-2200



Front Panel of the IPX-2500



Rear Panel of the IPX-2200 / IPX-2500



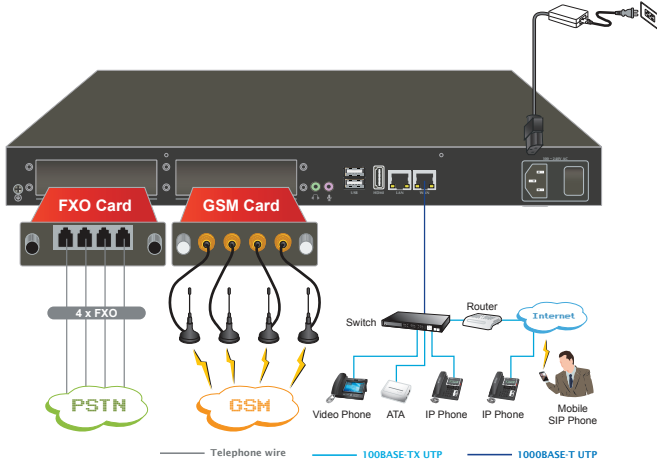
Note

1. Supporting 2 slots, user can buy expansion module like IPX-21FO (4 x FXO) or IPX-21GS (4 x GSM) for extending port service.
2. If IPX-21GS is used, please disable pin lock function. Otherwise, dial out or call in will not be available.

4.1.1 LED Definitions

Front Panel LED	Status	Description
PWR	Steady Green Off	PBX power ON PBX power OFF
SYS	Blinking Green Off	System is working System booting or failed
WAN	Blinking Green Off	Data is transferring No data transmitting
LAN	Blinking Green Off	Data is transferring No data transmitting
Slot 1~Slot 2 FXO / GSM / FXS	Steady Red Flashing Off	Channel loading succeeded Channel ringing Channel loading failed

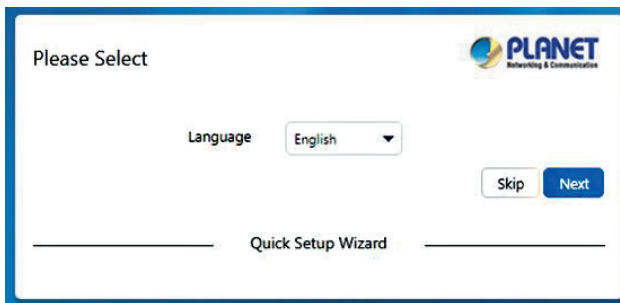
4.1.2 Physical Connection Topology of the IPX-2200 / IPX-2500



5. Basic System Configuration

5.1 New System Setup Wizard

- Step 1.** Connect a PC directly with the IP PBX on WAN or LAN port. Default IP of WAN port is **172.16.0.1**, and default IP of LAN port is **192.168.0.1**. Please change the PC IP address to 172.16.0.xx if you have connected WAN, or 192.168.1.xx if you have connected LAN.
- Step 2.** Start a web browser. The browser should be IE11, Firefox or Google Chrome.
- Step 3.** Enter the default URL of WAN port "**https://172.16.0.1**" or enter URL of LAN port "**https://192.168.0.1**" into the browser address bar to access its Web interface.
- Step 4.** Now you should be made known by a security warning. Please ignore the warning and proceed to access the IP PBX Web interface.
- Step 5.** By now you should have seen the **Quick Installation Wizard**. Please follow the wizard to go through a few steps of basic settings. Or you can skip the installation wizard.



5.2 Web Admin Login

After going through the quick installation wizard, the system will reboot for the new settings to take effect. Please wait for about 4 minutes for the Web page to refresh, and then you'll see the login screen like below.



The admin user name and password are defined by during the installation wizard process. If you have skipped the wizard, you'll need to log in with the default username and password which are both **"admin"**. Once you have modified the network profile during the quick installation wizard or after admin login, then you can power off and deploy the IPPBX system to your local LAN, and then power it on for further configurations.

(Default IP) For increased security, please use https to access IP PBX.

Default WAN IP: <https://172.16.0.1>

Default LAN IP: <https://192.168.0.1>

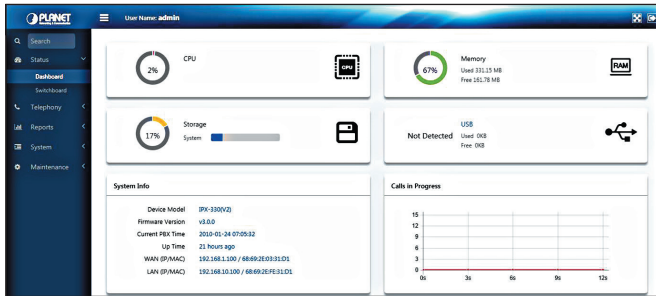
Default User Name: **admin**

Default Password: **admin**



Note

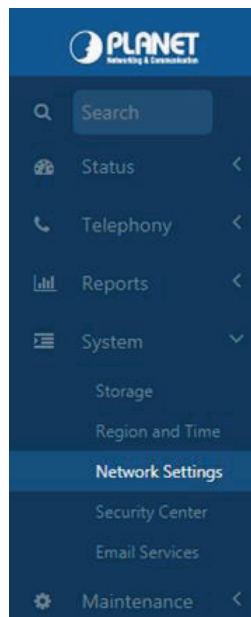
For security reason, please change and memorize the new password after this first setup.



Status Page of the IP PBX

5.2.1 Configuring the Network Setting

Step 1. Go to System → **Network Settings**



Network Button

The screenshot shows the 'Network Profiles' page with the 'VPN' tab selected. The 'Wan' section is active, displaying the following settings:

- Network Mode: Static IP
- IP: 172.16.0.1
- Netmask: 255.255.0.0
- Gateway: 172.16.0.254
- Primary DNS: 8.8.8.8
- Alternative DNS: 168.95.1.1
- Enable Virtual IP: Off

The 'Lan' section is also visible, showing:

- IP: 192.168.0.1
- Netmask: 255.255.255.0

Both sections have a 'Save' button at the bottom.

Network Profiles Page

Step 2. Edit your WAN port IP information.

There are two types of Ethernet port connection and they are Static IP and DHCP. You can find a detailed setting process in the user manual.

The screenshot shows the 'Network Profiles' page with the 'VPN' tab selected. The 'Wan' section is active, and the 'Network Mode' dropdown menu is open, showing the following options:

- Static IP (highlighted)
- DHCP

The other settings in the 'Wan' section are:

- IP: 192.168.1.1
- Netmask: 255.255.255.0
- Gateway: 192.168.1.1
- Primary DNS: 8.8.8.8
- Alternative DNS: 114.114.114.114
- Enable Virtual IP: Off

A 'Save' button is located at the bottom of the 'Wan' section.

Selection of IP Connection Type

5.2.2 Changing IP Address or forgotten Admin Password

To reset the IP address to the default IP address "192.168.0.1" (LAN) or reset the login password to default value, press the reset button on the front panel for **more than 6 seconds**. After the device is rebooted, you can login the management Web interface within the same subnet of 192.168.0.x.



Note

After pressing the "Reset" button, all the system data will be reset to default; if possible, back up the config file before resetting.

6. Further Configuration

Thank you for purchasing PLANET products. The above steps introduce the simple configurations of the **IPX-330**, **IPX-2100**, **IPX-2200** and **IPX-2500**. For further configuration, please refer to the user's manual. If you have other questions, please contact the **local dealer** or **distributor** where you purchased this product.

PLANET IPX series user's manual:

IPX-330	IPX-2100
 http://www.planet.com.tw/en/support/download.php?view=3&key=IPX-330#list	 http://www.planet.com.tw/en/support/download.php?view=3&key=IPX-2100#list
IPX-2200	IPX-2500
 http://www.planet.com.tw/en/support/download.php?view=3&key=IPX-2200#list	 http://www.planet.com.tw/en/support/download.php?view=3&key=IPX-2500#list

You also can browse our online FAQ resource at PLANET Web site first to check if it could solve your issue. If you need more support information, please contact PLANET support team.

PLANET online FAQ :

<http://www.planet.com.tw/en/support/faq.php>

IP Telephony support team mail address :

support_voip@planet.com.tw

Copyright © PLANET Technology Corp. 2018.

Contents are subject to revision without prior notice.

PLANET is a registered trademark of PLANET Technology Corp. All other trademarks belong to their respective owners.